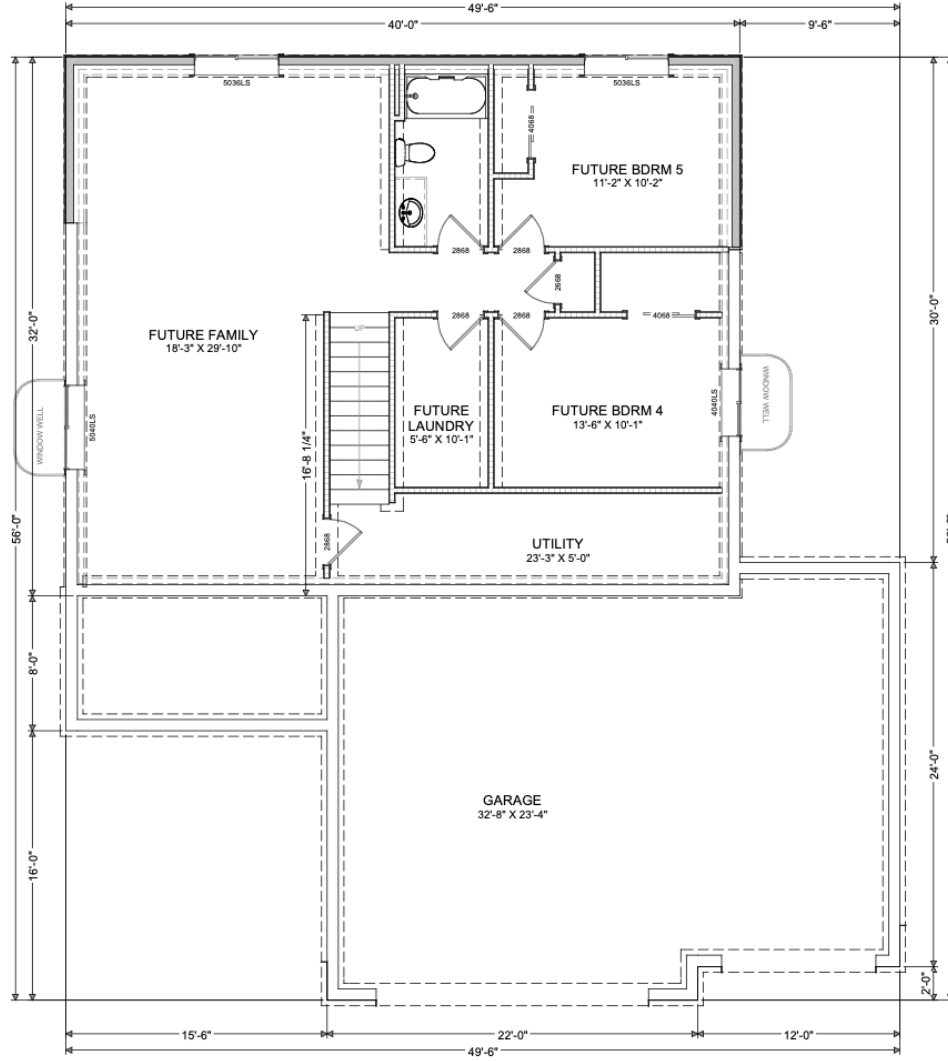


# Sodak Construction 1300 Plan





# Future Basement Plan



**HAMLIN**  
Building Center  
www.hamlinbc.com

**REVISIONS**  
PLAN: W

FIELD VERIFY ALL DIMENSIONS!  
ALL EXTERIOR DIMENSIONS  
ARE TO FACE OF  
FRAMING/CONCRETE!

**SODCON**  
**1300 RANCH**  
LOCATION IF KNOWN

**FOUNDATION:**  
UNFINISHED BASEMENT  
8' CEILINGS  
(UNLESS OTHERWISE NOTED)

# Details

- 1300 Square Feet
- 3 bedrooms, 2 bathrooms
- Unfinished Basement
- 3-Stall Unfinished Garage
- Standard Finishes
- Gas Furnace w/ AC
- Vinyl Plank
- Carpet in Bedrooms & on Steps
- James Hardie Siding
- Real Stone
- 10' x 10' Deck
- Seed, Sprinkler, Rock & Edging